

An active community to promote research, knowledge transfer and innovation



Parc Científic de Barcelona
UNIVERSITAT DE BARCELONA



Catalunya: Innovation, entrepreneurship and network thinking

DYNAMIC ECONOMY

- Area: 32.106 km²
- Population: 8 millions (2023)
- GDP: 270.710 M€ (2022)
- GDP per capita: 34.800 €/year (2022)
- Companies: 642.000 (2022)

INVESTMENT

- 220 M€ raised in 2023 (52% from venture capital companies)

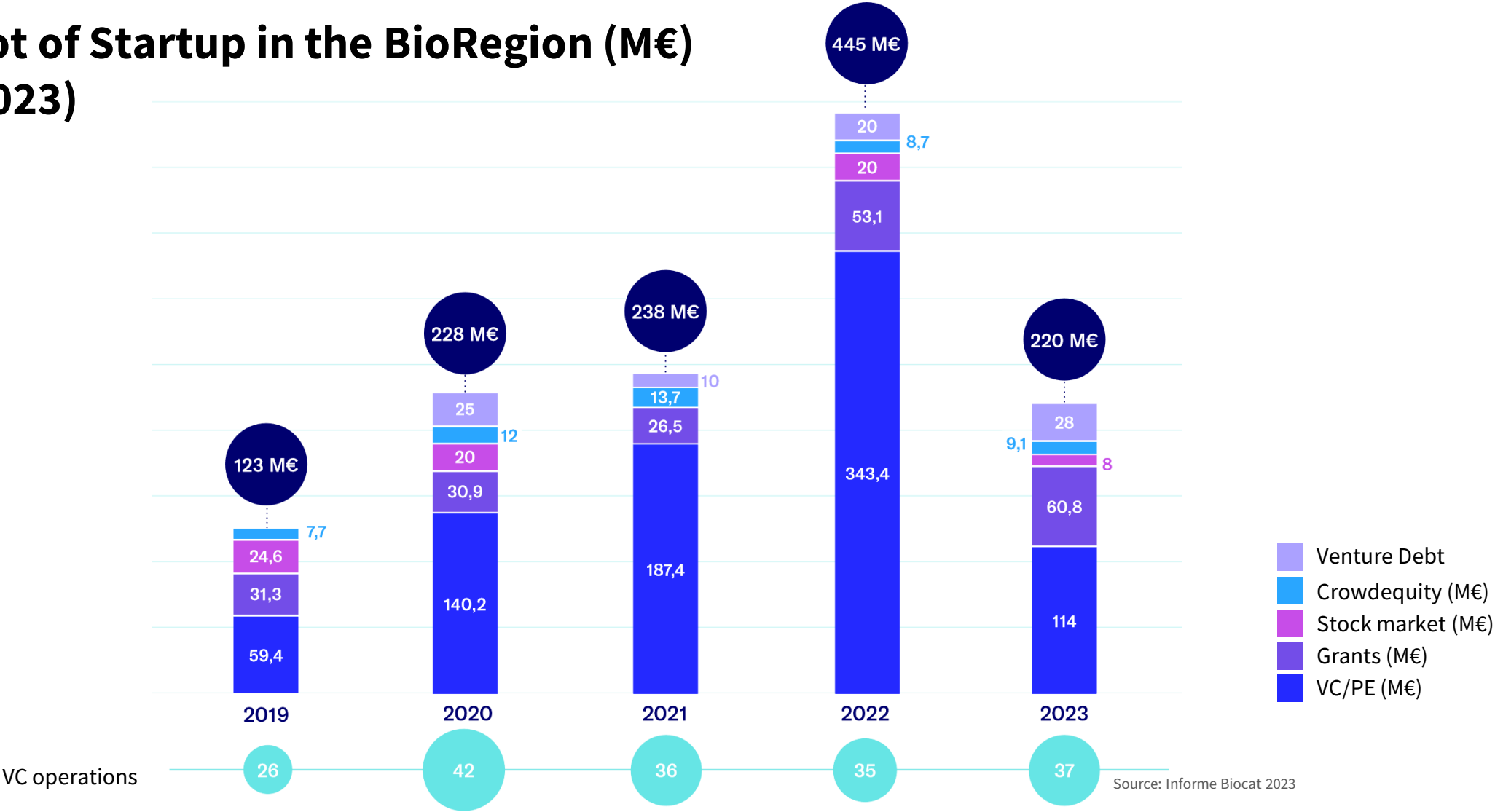
LIFE SCIENCES AND HEALTH CARE

- 7,9% of Catalonia's GDP (4,1% industrial subsector and 3,8% health services) (2023)
- Invoicing: 42.068 M€ (health services included) (2023)
- 264.000 jobs (2023)
- It employs 6,5% of the employed population (2023)
- 91 research institutes and more than 1.400 companies (2023)

Source: Idescat, Biocat, CataloniaBIO & Healthtech

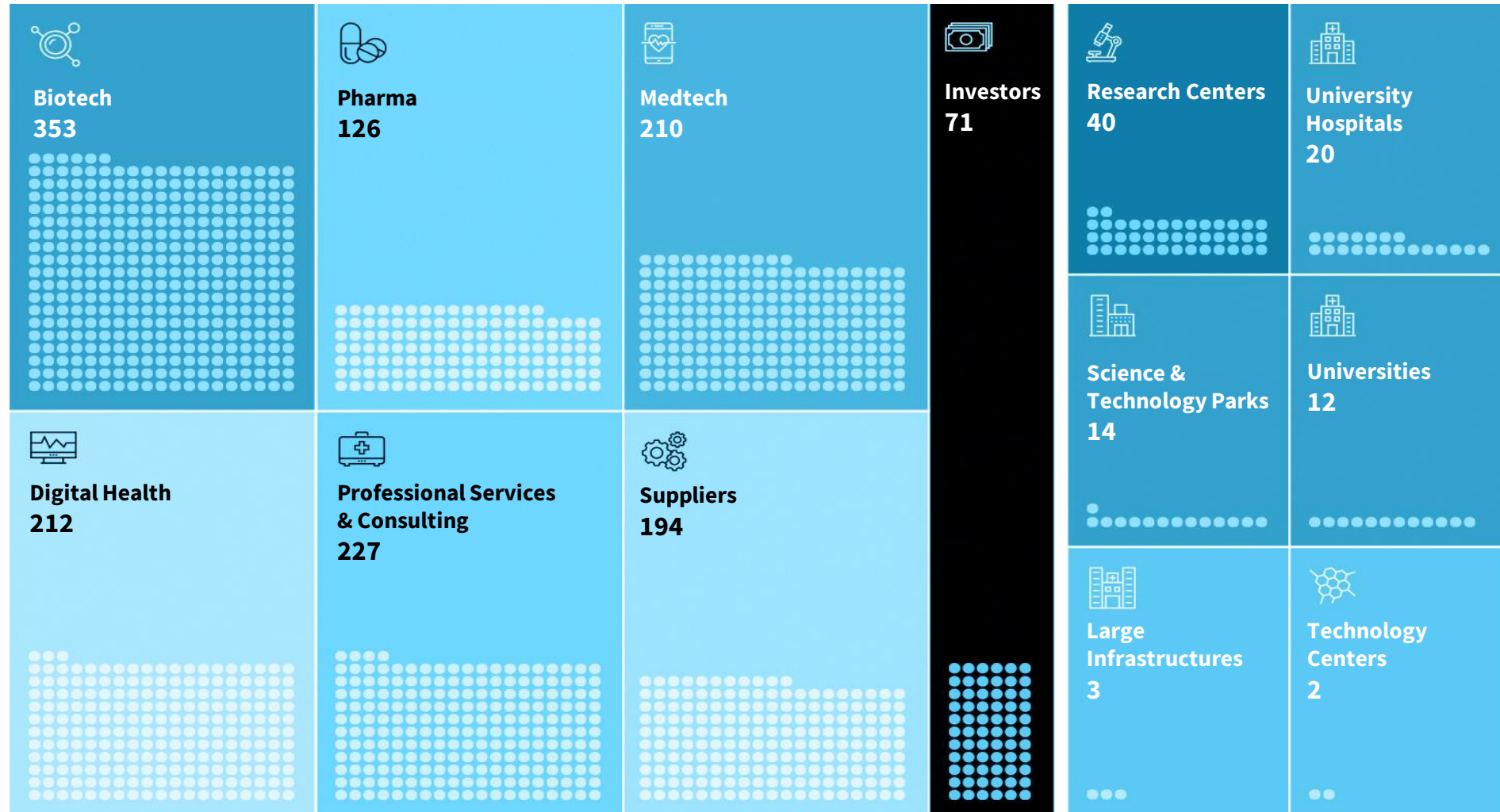
Catalunya: Innovation, entrepreneurship and network thinking

Snapshot of Startup in the BioRegion (M€)
(2019-2023)



The BioRegion of Catalunya: Agents of the ecosystem

+1.400 companies



Source: Informe Biocat 2023

The UB in figures

Academic offer

16 faculties
73 degrees
10 affiliated centers
172 university master's degrees
47 doctoral programs
802 continuous training courses (IL3-UB)

Students and researchers in training

62.252 students:

- 41.095 degrees
- 5.523 university master's degrees
- 10.644 postgraduate
- 4.990 researchers in training

R&D

- 253 M € research funds raised
- 632 doctoral theses read (provisional data)
- 7.599 scientific publications
- 1.111 active research projects
- 50 projects awarded by the Horizon and Europe 2020 program
- 87 patents applied for
- 737 contracts of the Bosch i Gimpera Foundation

The UB is the only Spanish university that is a member of the League of European Research Universities. Many external international institutions recognize the leadership of the UB and place it in leading positions in the most prestigious rankings: according to the **Academic Ranking of World Universities 2023, the UB is 201st best university in the world.**

The UB is one of the best universities in the world in 35 of the 54 scientific areas analyzed by the **Shanghai Ranking Global Ranking of Academic Subjects 2021**. In 8 of the subjects analyzed, the UB is among the **100 best** in the world and is ranked **45** worldwide in clinical medicine.

Source: La UB en xifres 2023



UNIVERSITAT DE
BARCELONA



Barcelona Science Park

- The creation of the PCB was promoted by the University of Barcelona in the early 90s and the park **was founded in 1997**.
- The PCB is a foundation, in its Board of Trustees there are the following institutions:
 - University of Barcelona
 - Generalitat de Catalunya
 - Ayuntamiento de Barcelona
 - Fundació Bosch i Gimpera
 - Consejo Superior de Investigaciones Científicas (CSIC)



Mission:

Promote research, knowledge transfer and innovation in the public and private sector, through intelligent management of spaces, the technological offer and the relations and dialogue of the Parc Community.

Vision:

To become a public-private research community of international reference for the benefit of the scientific leadership of Catalonia, its economic growth and the attraction of talent.

Values:

Communication,
Commitment,
Responsibility,
Passion,
Teamwork

Buildings

The Park offers 33,000m² useful office and laboratory space for users

Parc Científic de Barcelona

7	22.311m ²	10.942 m ²	4.903m ²	2	1	3	12	3
buildings	of laboratories	of offices	for scientific services	restaurants	parking	outside areas	meeting rooms	conference rooms



Laboratories, offices and unique spaces



Laboratories



Offices



Conference and networking spaces



Meeting rooms, courses and seminars

Wide range of scientific services

Self-service-based equipment and facilities



Common Scientific Services



Radioactive Facility



Drosophila



Freezers and Cryotanks Storage



Special Reactions

Animal facility

2.600 m2 zoological core to offer benchmark services and facilities in research with live models.

The animal facility assesses, designs and develops projects for third parties in the areas of biomedicine and biotechnology.



Animal facility

Other scientific infrastructure in the Parc

cnag

centre nacional d'anàlisi genòmica
centro nacional de análisis genómico



INSTITUTE FOR RESEARCH IN BIOMEDICINE

IBEC

Institute for Bioengineering of Catalonia

ibmb
INSTITUTE OF BIOMEDICAL RESEARCH
CSIC



CCiTUB

Centres Científics i Tecnològics
UNIVERSITAT DE BARCELONA

Common Scientific Services

Centralised equipment and facilities to support research in order to guarantee flexibility and optimise resources.

- 1.370m2 of fully-equipped laboratory space on a self-service basis 24/7/365.
- Online equipment booking.
- Clean rooms: primary cultures, cell lines, yeast cultures and bacterial cultures.
- Centrifuge rooms: Benchtop, High speed/high capacity, ultracentrifuges and shaker incubators.
- Climatic chamber (37°C) with shaking platforms.
- Cold chambers, ultrafreezers and cryotanks.
- Histology room.
- Rooms with spectroscopic equipment.
- Microscopy rooms.
- Dark rooms.
- Protein purification equipment laboratory.
- Cleaning and sterilisation service.

The PCB Community

3.500
Professionals



+ de 125
Entities

More than 100
Companies

11
Non-profit entities

7 research centres

- Institute for Research in Biomedicine (IRB)
- Institute for Bioengineering of Catalonia (IBEC)
- Molecular Biology Institute of Barcelona (IBMB-CSIC)
- National Center for Genomic Analysis (CNAG)
- Institute of Cosmos Sciences (ICCUB)
- Rheumatology Research Group (Vall d'Hebrón)
- VIH-AIDS unity (Hospital Clínic)

7
**Groups, units and services of
the University of Barcelona**

Companies

Biotechnology - Therapeutics and Diagnostics



Associated

Medical Technology



Associated

Pharma



Cosmetics



Associated

Food



Digital Health



Associated

Biotechnology - R&D Services



Associated

Professional Services and Consulting



Supplier & Engineering



Others



Associated

Research Centers and other entities

Research centres



Non-profit organizations



University of Barcelona groups, units and services



- Biomolecular NMR
- Metabolic Dynamics in Cancer

- Macrophage Biology Group
- Translational Immunology Group

Sustainability in the corporate strategy of the PCB

The Park has incorporated sustainability into its corporate strategy and has approved a **Plan for the period 2022-2025** with a total of **20 projects and 44 actions** that impact the institution's activity and are based on **7 sustainable development goals** that the Park has identified as most relevant to its activity.

The sustainability strategy is communicated through a corporate website that outlines the actions of the plan, various indicators, implemented actions, and a collection of sustainability notes that are published weekly.



Pla de Sostenibilitat 2022-2025



Parc Científic de Barcelona
UNIVERSITAT DE BARCELONA



Revitalization of the PCB Community



Networking

- Coffee Connection
- Influencers
- PCBakers
- PCBeers



Training

- Acts, conferences and workshops: scientific, financial, entrepreneurship and legal

Leisure

- Yoga
- Physiotherapy
- Children Science

Sustainability

- Car pooling

Contests

- Photo contest 'One day at the PCB'

RESSÒ, Research in Society program

(R)
RESSÒ

RESSÒ has been awakening the scientific vocations and critical thinking of **over 7,400 students aged 10 to 18** in the Catalan territory for over 20 years, involving **more than 100 researchers** from over 15 research centers.

(T) TALLERS



10
Temàtiques



87
Centros educativos



94
Talleres



2417
Alumnos participantes



30
Personal investigador

(M) MONÒLEGS



2274
Alumnos participantes



97
Videos presentados



74
Centros educativos



119
Profesorado

(B) BATX2LAB



43
Trabajos de investigación



40-45
Alumnos participantes



19
Personal investigador

(F) FIRA



2533
Participantes



11
Grupos de investigación

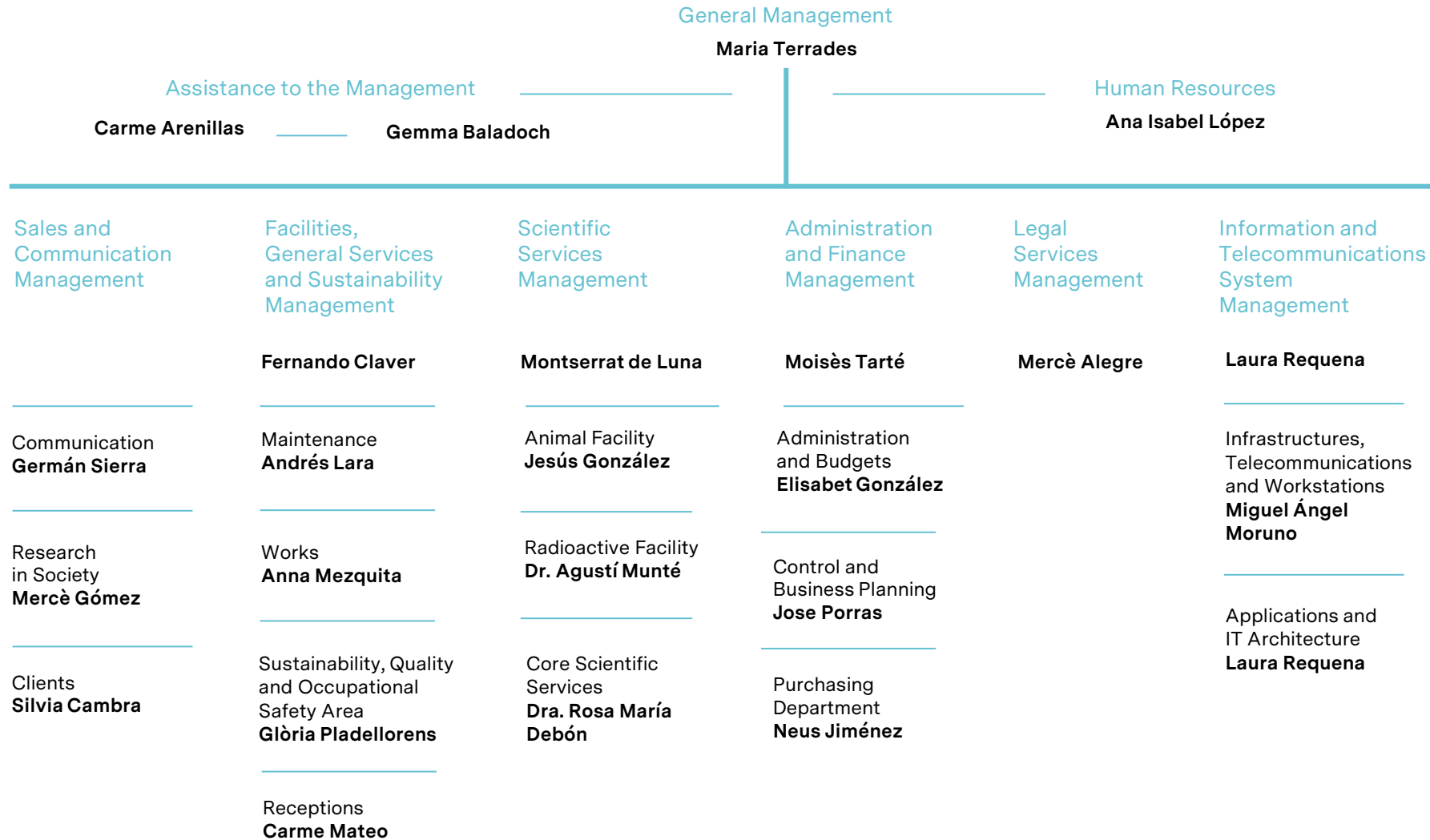


100
Personal investigador



55
Centros educativos

Organigrama





Parc Científic de Barcelona
UNIVERSITAT DE BARCELONA

